



Also available with:



END FITTINGS

A wide range of end fittings are available to attach our gas struts to your application.

Mild steel end fittings have a bright zinc finish (others available on special request).

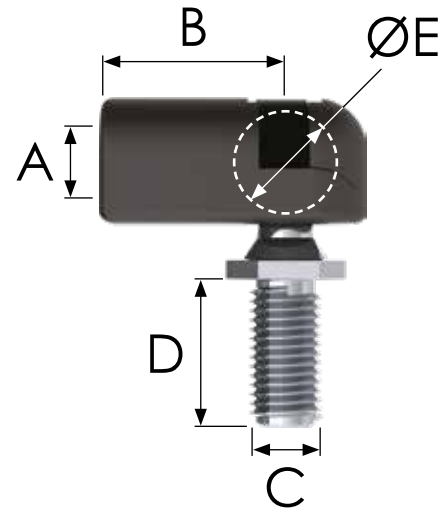
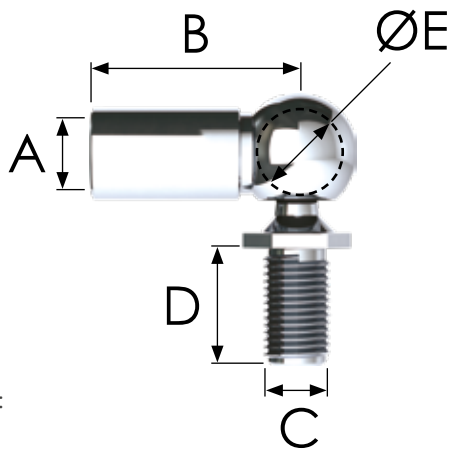
Stainless steel end fittings are available in 304 and 316.

Plastic end fittings are supplied with a black finish.

BALL JOINTS

END FITTINGS

STANDARD STEEL, 316 STAINLESS STEEL AND PLASTIC



Also available in:



Images for illustration only.

STEEL BALL JOINTS

CODE	SS CODE	A	B	C	D	E	STRUT ROD DIA
B0	-	M6	22	M5	13	8	6 & 8mm
B1	SSB1	M6	18	M6	13	10	6 & 8mm
B2	-	M6	20	M6	13	10	6 & 8mm
B3	SSB3	M6	25	M6	13	10	6 & 8mm
B4	-	M6	30	M6	13	10	6 & 8mm
B5	SSB5	M6	18	M8	13	10	6 & 8mm
B5-10S	-	M8	18	M8	13	10	10mm
B6	SSB6	M6	20	M8	13	10	6 & 8mm
B7	SSB7	M6	25	M8	13	10	6 & 8mm
B7-10S	-	M8	25	M8	13	10	10mm
B8	-	M6	30	M8	13	10	6 & 8mm
B9	SSB9	M8	18	M8	16.5	13	10mm
B10	SSB10	M8	20	M8	16.5	13	10mm
B11	SSB11	M8	25	M8	16.5	13	10mm
B12	-	M8	30	M8	16.5	13	10mm
B13	-	M10	25	M10	20	16	14mm
B13-A	-	M10	25	M8	14	13	14mm
B14	-	M10	30	M10	20	16	14mm
B14-A	-	M10	30	M8	14	13	14mm
B15	SSB15	M10	35	M10	20	16	14mm
B15-A	-	M10	35	M8	14	13	14mm
B16	-	M14	45	M14	28	20	20mm

PLASTIC BALL JOINTS

CODE	SS CODE	A	B	C	D	E	STRUT ROD DIA
PB1	-	M6	18	M6	13	10	6 & 8mm
PB2	-	M6	25	M6	13	10	6 & 8mm
PB3	-	M6	18	M8	13	10	6 & 8mm
PB4	-	M6	25	M8	13	10	6 & 8mm
PB5	-	M8	18	M8	13	10	10mm

Strut force should be less than 400N

KEY

LABEL	PART	DESCRIPTION
A	INTERNAL THREAD	Where the end fitting screws onto the strut
B	FITTING LENGTH	From the centre of the socket to the end of the fitting
C	STUD THREAD	Where the end fitting attaches to the application
D	STUD LENGTH	Length of the thread that attaches to the application
E	BALL DIAMETER	Diameter of the spherical ball attached to the stud

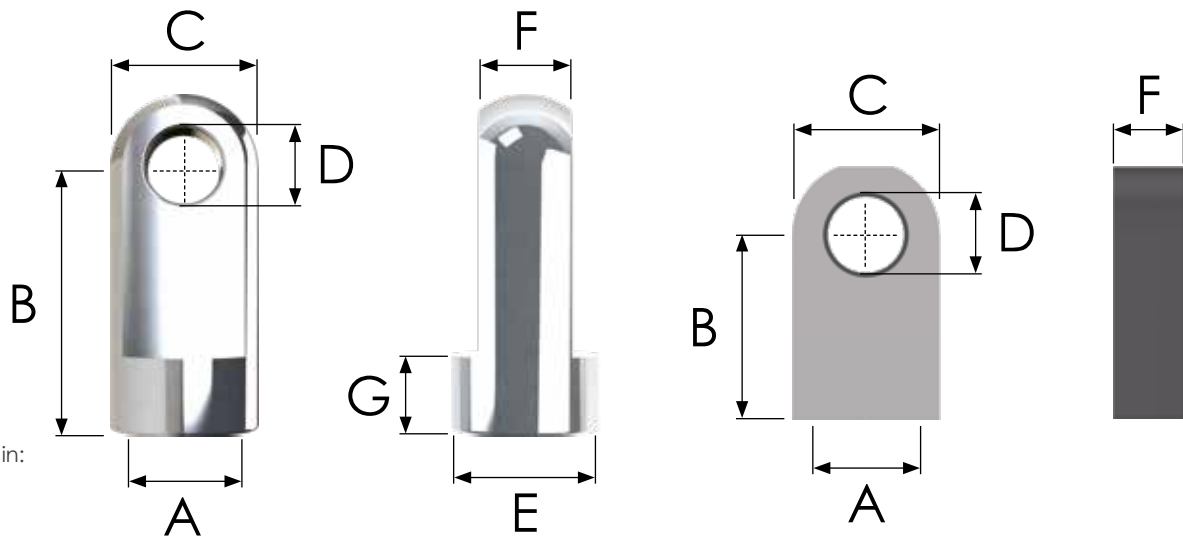
ADVICE ON USING END FITTINGS

- Where possible use ball joints to avoid side loading
- Ensure end fittings are fully screwed to the strut
- Ensure end fittings are in line to avoid side loading
- When using ball joints ensure the stud is fixed to the socket and the clip is in position
- Ensure the gas strut matches the chosen end fittings

BRACKETS

See pages 58 - 66 for our full range





Also available in:



STEEL EYE ENDS

CODE	SS CODE	A	B	C	D	E	F	G	STRUT ROD DIA
E0	-	M6	17	13	6	9	2.8	10	6 & 8mm
E1	SSE1	M6	18	15	8.5	12	4.8	11	6 & 8mm
E2	SSE2	M6	20	15	8.5	11	4.8	12	6 & 8mm
E3	SSE3	M6	22	15	8.5	9	4.8	12	6 & 8mm
E4	SSE4	M6	25	15	8.5	11	4.8	12	6 & 8mm
E5	SSE5	M6	30	15	8.5	12	4.8	16	6 & 8mm
E6	SSE6	M8	18	18	8	18	9.8	6	10mm
E7	-	M8	20	14	8	14	9.8	7	10mm
E8	-	M8	22	14	8	14	9.8	10	10mm
E9	SSE9	M8	25	18	8.5	18	9.8	5	10mm
E10	SSE10	M8	30	18	8	18	9.8	14	10mm
-	SSE10-A	M8	30	18	12	18	9.8	14	10mm
E11	-	M10	22	20	10	20	11.8	10	14mm
E12	-	M10	30	20	10	20	11.8	14	14mm
E13	SSE13	M10	35	20	10	20	11.8	16	14mm
E14	-	M14	40	25	14	25	13.8	20	20mm
-	SSE15-A	M10	25	20	12	20	11.8	10	14mm

SHOULDERLESS STEEL EYE ENDS

CODE	SS CODE	A	B	C	D	F	STRUT ROD DIA
CE2	-	M6	16	16	8.25	8	6 & 8mm
CE5	-	M6	20	16	8.25	7.8	6 & 8mm

KEY

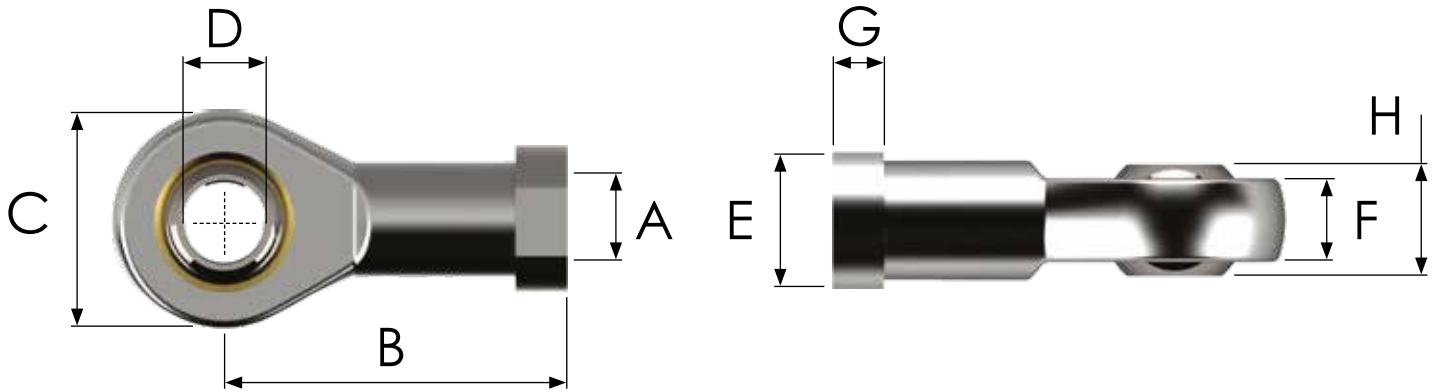
LABEL	PART	DESCRIPTION
A	INTERNAL THREAD	Where the end fitting screws onto the strut
B	FITTING LENGTH	From the centre of the eye to the end of the fitting
C	OUTER RADIUS	Outer eye radius
D	EYE HOLE DIAMETER	The measurement of the internal diameter of the eye
E	SHOULDER WIDTH	Width of the shoulder
F	THICKNESS	Eye thickness
G	SHOULDER HEIGHT	Height of the shoulder

ADVICE ON USING END FITTINGS

- Where possible use ball joints to avoid side loading
- Ensure end fittings are fully screwed to the strut
- Ensure end fittings are in line to avoid side loading
- When using ball joints ensure the stud is fixed to the socket and the clip is in position
- Ensure the gas strut matches the chosen end fittings

BRACKETS

See pages 58 - 66 for our full range



Also available in:



STEEL ROSE EYES

CODE	SS CODE	A	B	C	D	E	F	G	H	STRUT ROD DIA
RE8	SSRE8	M6	30	20	6	11	6.75	5	9	6 & 8mm
RE10	SSRE10	M8	36	24	8	14	9	5	12	10mm
RE12	SSRE12	M10	43	28	10	17	10.5	6.5	14	14mm

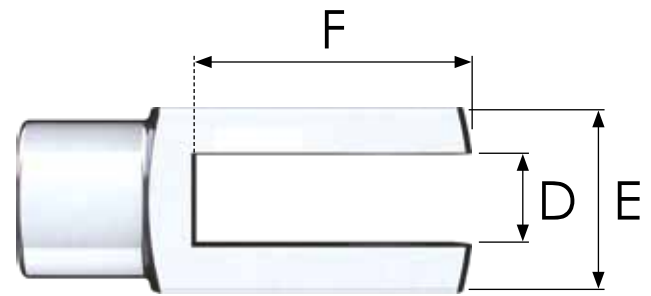
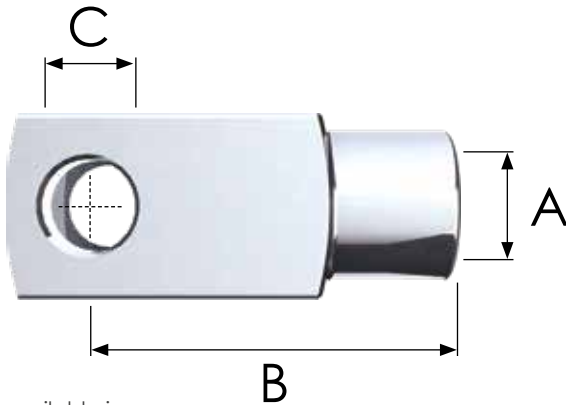
KEY

LABEL	PART	DESCRIPTION
A	INTERNAL THREAD	Where the end fitting screws onto the strut
B	FITTING LENGTH	From the centre of the eye to the end of the fitting
C	OUTER RADIUS	Outer eye radius
D	EYE HOLE DIAMETER	The measurement of the internal diameter of the eye
E	SHOULDER WIDTH	Width of the shoulder
F	THICKNESS	Eye thickness
G	SHOULDER HEIGHT	Height of the shoulder
H	SPHERE PROFILE	Width of the sphere profile

ADVICE ON USING END FITTINGS

- Where possible use ball joints to avoid side loading
- Ensure end fittings are fully screwed to the strut
- Ensure end fittings are in line to avoid side loading
- When using ball joints ensure the stud is fixed to the socket and the clip is in position
- Ensure the gas strut matches the chosen end fittings





Also available in:



STEEL CLEVIS FORKS

CODE	SS CODE	A	B	C	D	E	F	STRUT ROD DIA
C1	SSC1	M6	24	6	6	12	19	6 & 8mm
C2	SSC2	M8	32	8	8	16	25	10mm
C3	SSC3	M10	40	10	10	20	32	14mm
C4	-	M14	56	14	14	27	44	20mm

KEY

LABEL	PART	DESCRIPTION
A	INTERNAL THREAD	Where the end fitting screws onto the strut
B	FITTING LENGTH	From the centre of the eye to the end of the fitting
C	EYE HOLE DIAMETER	The measurement of the internal diameter of the eye
D	GAP WIDTH	Width of the fork gap
E	EXTERNAL WIDTH	External width of the fork
F	FORK DEPTH	Depth of the fork

ADVICE ON USING END FITTINGS

- Where possible use ball joints to avoid side loading
- Ensure end fittings are fully screwed to the strut
- Ensure end fittings are in line to avoid side loading
- When using ball joints ensure the stud is fixed to the socket and the clip is in position
- Ensure the gas strut matches the chosen end fittings

BRACKETS

See pages 58 - 66 for our full range

