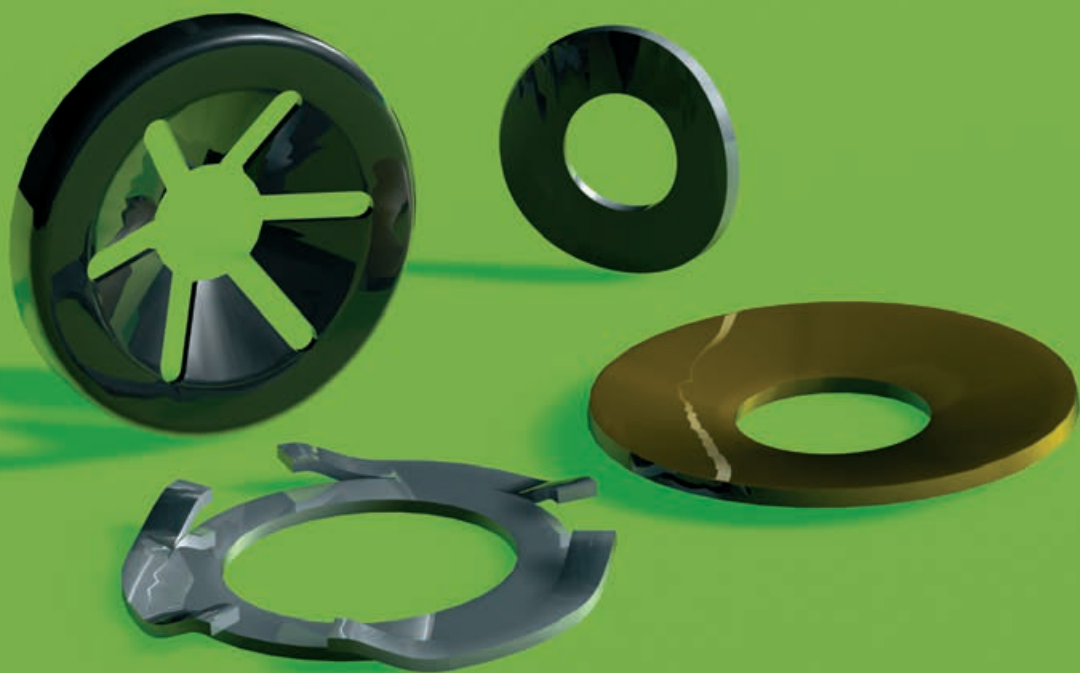


# SPRING WASHERS



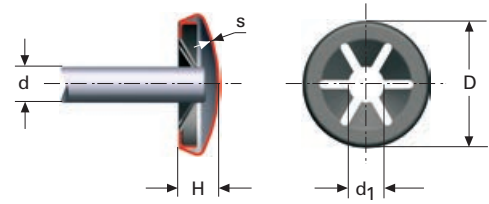
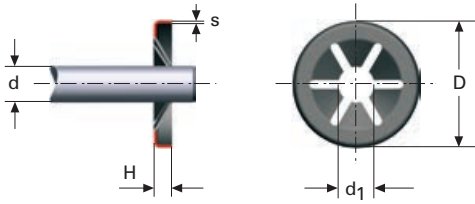
# LOCK WASHERS

WLA, WLB



Aranlock lock washers are ideal for use as locking devices on shafts and tubes, etc. The lock washer has radial tabs with reinforcements on the edges, which increases the locking capacity and can be used on most materials, such as steel, metals or plastic.

In many cases, Aranlock can replace nuts, pins or other similar locking devices. Normally, no preparation of the shaft, such as grooves, is necessary, as the locking mechanism is very effective on its own. Fitting is simple and fast. The washer sits firmly and can only be removed by being broken.



## TYPE A

Lock washer for general use.

Material: CK 67

## TYPE B

Lock washer with nickel-plated cup.

Ideal for use as a stop on a shaft.

Material: CK 67

d	D±0,20	d <sub>1</sub>	H±0,15	S	No. slits	Cat.no
2	9,5	1,50-1,65	1,2	0,2	4	4814
2,5	6,5	2,00-2,15	1,2	0,2	4	4815
3	9,5	2,50-2,650	1,2	0,2	4	4816
2	11,3	1,50-1,65	1,5	0,2	5	4817
3	11,3	2,70-2,80	1,5	0,2	6	4818
4	11,3	3,50-3,65	1,2	0,2	6	4819
5	11,3	4,50-4,65	1,2	0,2	6	4820
4	15	3,50-3,65	1,5	0,3	6	4821
5	15	4,50-4,65	1,5	0,3	6	4822
6	15	5,50-5,65	1,5	0,3	6	4823
7	15	6,50-6,65	1,5	0,3	6	4824
8	15	7,50-7,65	1,5	0,3	6	4825
8	18	7,50-7,65	1,6	0,3	6	4826
9	18	8,50-8,65	1,6	0,3	6	4827
10	18	9,50-9,65	1,6	0,3	6	4828
8	21	7,50-7,65	2,1	0,3	6	4830
9	21	8,50-8,65	2,1	0,3	6	4832
10	21	9,50-9,65	2,1	0,3	6	4834
11	21	10,50-10,65	2,1	0,3	6	4835
12	21	11,50-11,65	2,1	0,3	6	4836
18	36,5	17,30-17,45	3,2	0,4	9	4837

d	D±0,5	d <sub>1</sub>	H±0,2	S	No. slits	Cat.no
2	10	1,50-1,65	3,8	0,3	4	4838
2,5	7,5	2,00-2,15	3,0	0,3	4	4839
3	10	2,50-2,65	3,8	0,3	4	4840
2	12	1,50-1,65	4,5	0,3	5	4841
3	12	2,50-2,65	4,5	0,3	6	4842
4	12	3,50-3,65	4,5	0,3	6	4844
5	12	4,50-4,65	4,5	0,3	6	4845
4	16	3,50-3,65	6,0	0,3	6	4846
5	16	4,50-4,65	6,0	0,3	6	4847
6	16	5,50-5,65	6,0	0,3	6	4848
7	16	6,50-6,65	6,0	0,3	6	4849
8	16	7,50-7,65	5,7	0,3	6	4850
8	19	7,50-7,65	6,5	0,3	6	4851
9	19	8,50-8,65	6,5	0,3	6	5066
10	19	9,50-9,65	6,5	0,3	6	5067
8	22	7,50-7,65	7,0	0,3	6	5068
9	22	8,50-8,65	7,0	0,3	6	5069
10	22	9,50-9,65	7,0	0,3	6	5070
11	22	10,50-10,65	7,0	0,3	6	5071
12	22	11,50-11,65	7,0	0,3	6	5072