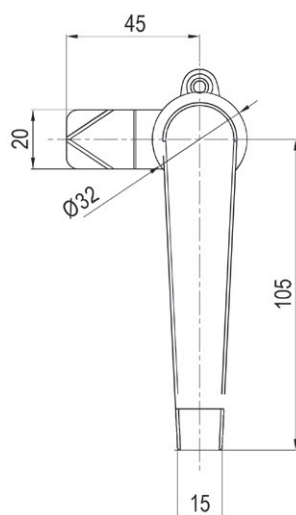
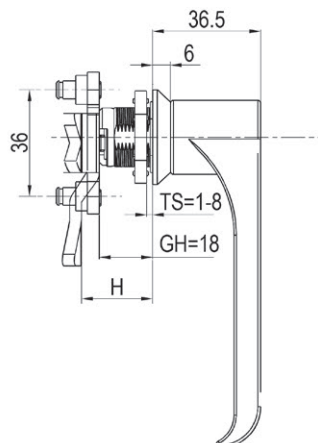
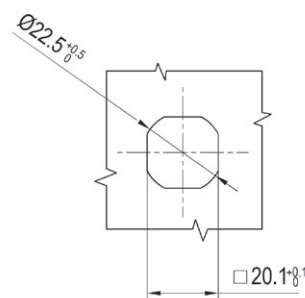


Key locking



Non-locking



Panel cutout



Zinc die handle and housing (black powder coated or bright chrome).  
Mild steel zinc plated cam.

	Black Textured Powder Coated	Bright Chrome	SS316
Key Locking	1311-10-20	1311-10-30	1311-10-316
Non Locking	1311-00-20	1311-00-30	1311-00-316

Accessories ref. page 238. Cam ref. page 232.

**Remark** 1. Keyed KEY333. 2. CH751 keyed on request. 3. Key different on request. 4. Cam sold separately.